



CHRONOS
RICHARDSON

**Specifically designed with
hygiene in mind**



CHRONO-WEIGH™ APW

Innovative weigher design for consistent product quality

In the modern flour mill precision data collection is essential to automate the labour intensive stock reconciliation needs of an efficiently run mill. This means as a miller you need to accurately record all material movements in the mill, from wheat intake right through the process to flour outloading.

The CHRONO-WEIGH™ APW from Chronos Richardson represents your best route to the necessary precision to realise enhanced operating profits. The innovative APW design ensures that weighing accuracy in the mill is not compromised whatever the product being monitored, extracted, controlled or totalised.

High accuracy weighing – for optimum mill performance

- Weight transducing system incorporating advanced digital technology
- Simple calibration routine. Innovative single point weigh hopper suspension requires minimal re-calibration
- Advanced digital technology ensures rapid weight stabilisation and is unaffected by off centre loading
- Integral air balancing system enables the APW to be discharged via most rotary seals into positive pneumatic conveying systems without significant loss of weighing accuracy
- High dynamic accuracies are achieved on all wheat based products, at all throughput rates

Hygienic design for the modern flour mill

- The neat cylindrical weigh hopper has no internal ledges and the hopper surfaces are smooth to minimise material hang-up
- Externally the weigher has been designed to have a minimum of horizontal surfaces. Those horizontal surfaces present by necessity are easily accessible for quick and efficient cleaning
- Hermetically sealed for life weight transducer
- No restrictive weigh hopper casing. All other components are easily accessible for routine cleaning and maintenance
- Oil free pneumatics and sealed for life bearings
- The in-built air balancing system is designed to minimise product build up on internal surfaces



One of two pullout covers permitting fast access for visual inspection of internal surfaces

One of three in-built air displacement ducts

Safely enclosed oil free pneumatic control valves

In-built state-of-the-art PC 456 controller

A scaled compartment housing weight digitising and microprocessor controls

One of four easy to use calibration points for fast and accurate weigher calibration

A unique single point weigh hopper suspension utilising a hermetically sealed for life weight transducer

Safely enclosed single termination point for incoming power and interconnection cables for system integration



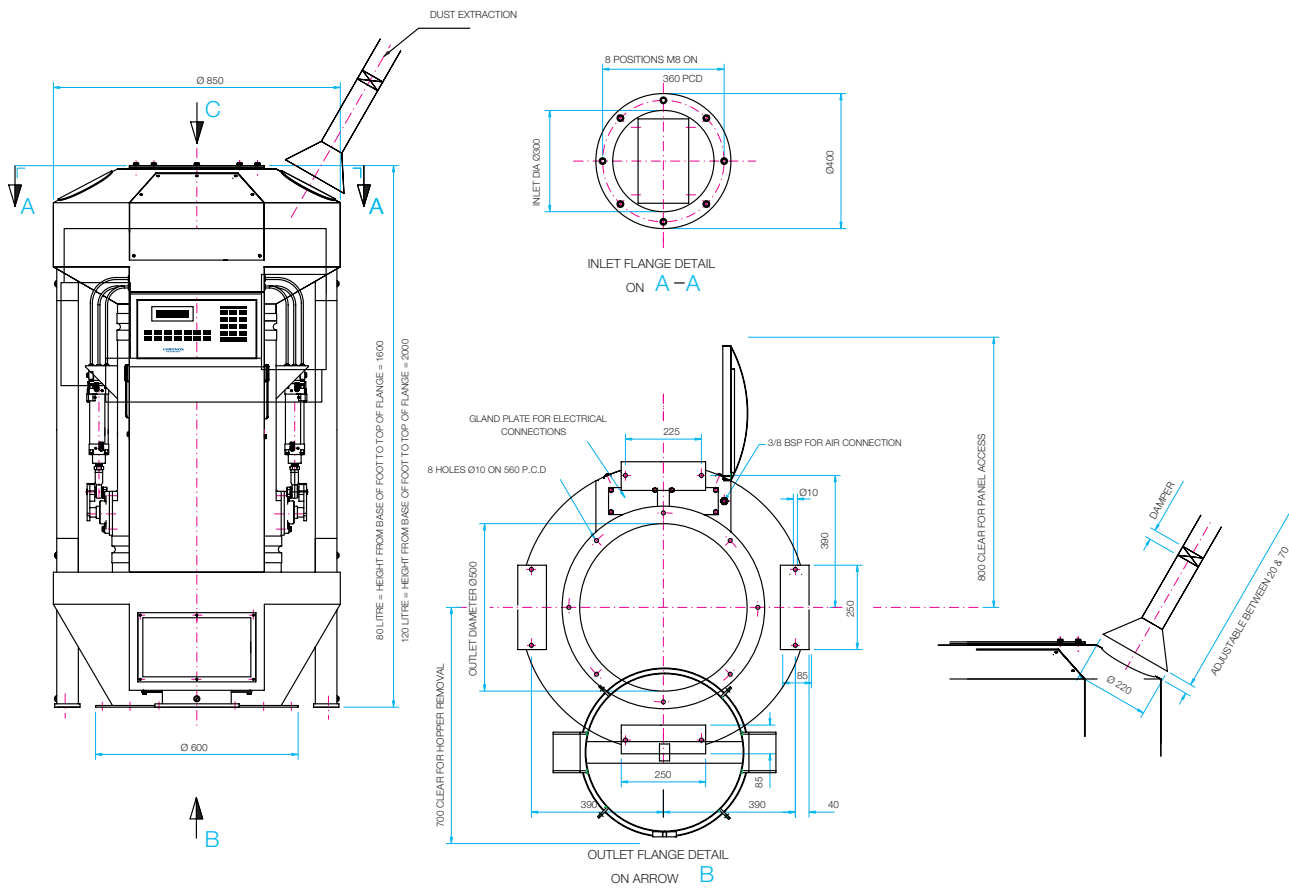
Versatile design suited to all milling requirements

- Four weigh hopper capacities (40 litre, 80 litre, 120 litre and 170 litre versions) cover the full range of milling throughputs
- Neat compact design featuring integral feedgate and discharge doors
- Weigher design is suitable for all grain milling and associated products
- Single or two position feedgate versions available
- Capable of operating in extraction, monitoring, controlling or totalising modes
- APW Weighers are designed for simple interfacing into new or existing mills
- APW is capable of freestanding operation, but can be interfaced with any mill control system

Highly integrated microelectronic design minimises the hardware components, to maximise reliability



Technical Data



Subsidiaries:

Chronos Richardson GmbH
Germany

Chronos Richardson Ltd.
United Kingdom

Chronos Richardson S.A.
France

Chronos Richardson S.r.l.
Italy

Chronos Richardson Inc.
USA

Chronos Asia Pacific Sdn.Bhd.
Malaysia

Chronos Richardson (Thailand) Ltd.
Thailand

Chronos Richardson India (P) Ltd.
India

Representatives in other countries.
Liaison offices in Beijing, China and
Hong Kong.

internet: www.ChronosRichardson.com
e-mail: info@ChronosRichardson.com

CHRONO-WEIGH™ APW	
Air supply	Pressure: 4-6 bar g Consumption: 90 l/min max. at 6 bar g
Temperature range	+ 5° C to + 40° C
Permissible vibration	> 20 Hz
Static load	230 kg, 250 kg and 280 kg
Capacity	40 litre, 80 litre, 120 litre and 170 litre
Weighing range	up to 50 tph
Minimum inclusion	10 kg
Static accuracy	+/- 0.1%
Power consumption (APW)	0.5 kW/hr
Control voltages	220v 50/60 Hz 110v 50/60 Hz 24v DC

CHRONOS
RICHARDSON